

# PYDAH COLLEGE OF PHARMACY

(Approved by PCI, AICTE and Affiliated to Andhra University, Visakhapatnam)

Yanam Road, PATAVALA, KAKINADA-533461, E.G.Dt

Telephone: 0884-2315344/45

Email id: princpharma@pydah.edu.in

website: www.pydahpharmacy.edu.in



## EMPLOYER FEEDBACK ON CURRICULUM ACADEMIC YEAR 2021-22

### 1. OBJECTIVE OF FEEDBACK

The college is affiliated to Andhra University, Visakhapatnam. The syllabus finalized by AU is implemented in the affiliated colleges. The IQAC of the college identifies the curricular gaps and plans for co-curricular/extracurricular activities in college. The college obtains feedback from all the stakeholders like students, alumni, employer and teachers on curriculum/syllabus to enrich the quality of activities performed in college for improvement of the professional skills, employability and entrepreneurial skills of the students.

### 2. SUMMARY OF FEEDBACK OBTAINED

S.NO	STAKEHOLDERS	NO. OF SAMPLE FEEDBACKS ANALYSED
1	Students	05
2	Teachers	03
3	Alumni	04
4	Employers	02

3. The feedback on curriculum was taken from the students of all years, Teachers, Alumni, and Employers at the end of each academic year.

  
IQAC COORDINATOR

  
PRINCIPAL

# PYDAH COLLEGE OF PHARMACY

(Approved by PCI, AICTE and Affiliated to Andhra University, Visakhapatnam)

Yanam Road, PATAVALA, KAKINADA-533461, E.G.Dt

Telephone: 0884-2315344/45

Email id: princpharma@pydah.edu.in

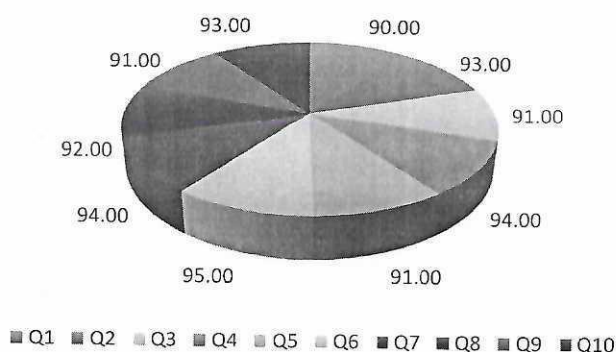
website: www.pydahpharmacy.edu.in



## EMPLOYER FEEDBACK AND ANALYSIS ON CURRICULUM DESIGN 2021-22

S.No	QUESTIONNAIRE	FEEDBACK %
1	How well do you think our graduates' skills and knowledge align with the current industry requirements?	90
2	Are there any specific areas of our curriculum that you believe require improvement to better prepare students for the workforce?	93
3	Do you find that our curriculum adequately covers the latest technological advancements and industry trends?	91
4	Are there any particular courses or subjects within our curriculum that you think are exceptionally beneficial to our graduates?	94
5	Are there any gaps in our curriculum that you believe should be addressed to enhance graduates' employability?	91
6	How well do our graduates demonstrate critical thinking and problem-solving skills, as taught in our curriculum?	95
7	Do you think our curriculum effectively integrates practical, hands-on experiences and real-world applications?	94
8	Are there any soft skills or non-technical competencies you feel our curriculum should focus on developing in our students?	92
9	How would you rate the overall adaptability and flexibility of our curriculum in response to changing industry needs?	91
10	In your opinion, does our curriculum adequately prepare students for leadership roles and ethical decision-making in the workplace?	93

### EMPLOYER FEEDBACK ANALYSIS ON CURRICULUM DESIGN A.Y.2021-22



  
IQAC COORDINATOR

  
PRINCIPAL