

# PYDAH COLLEGE OF PHARMACY

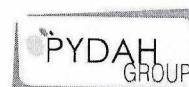
(Approved by PCI, AICTE and Affiliated to Andhra University, Visakhapatnam)

Yanam Road, PATAVALA, KAKINADA-533461, E.G.Dt

Telephone: 0884-2315344/45

Email id: princpharma@pydah.edu.in

website: www.pydahpharmacy.edu.in



Education & Beyond

## STUDENT FEEDBACK ON CURRICULUM ACADEMIC YEAR 2022-23

### 1. OBJECTIVE OF FEEDBACK

The college is affiliated to Andhra University, Visakhapatnam. The syllabus finalized by AU is implemented in the affiliated colleges. The IQAC of the college identifies the curricular gaps and plans for co-curricular/extracurricular activities in college. The college obtains feedback from all the stakeholders like students, alumni, employer and teachers on curriculum/syllabus to enrich the quality of activities performed in college for improvement of the professional skills, employability and entrepreneurial skills of the students.

### 2. SUMMARY OF FEEDBACK OBTAINED

S.NO	STAKEHOLDERS	NO. OF SAMPLE FEEDBACKS ANALYSED
1	Students	05
2	Teachers	04
3	Alumni	03
4	Employers	05

3. The feedback on curriculum was taken from the students of all years, Teachers, Alumni, and Employers at the end of each academic year.

  
IQAC COORDINATOR

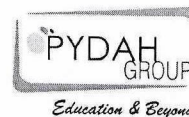
  
PRINCIPAL

# PYDAH COLLEGE OF PHARMACY

(Approved by PCI, AICTE and Affiliated to Andhra University, Visakhapatnam)

Yanam Road, PATAVALA, KAKINADA-533461, E.G.Dt

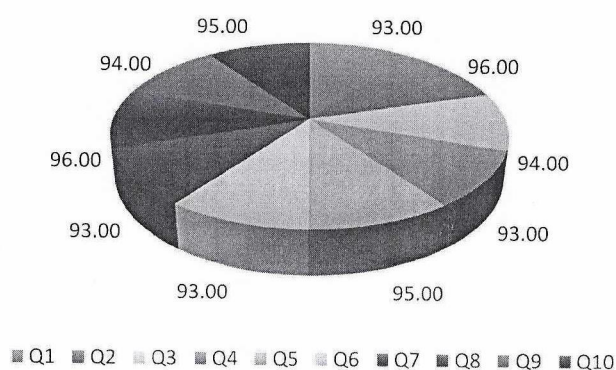
Telephone: 0884-2315344/45 Email id: princpharma@pydah.edu.in website: www.pydahpharmacy.edu.in



## STUDENT FEEDBACK AND ANALYSIS ON CURRICULUM DESIGN 2022-23

S.No	QUESTIONNAIRE	FEEDBACK %
1	Are the course materials and textbooks provided aligned with the learning objectives of the curriculum?	93
2	Do you find the curriculum to be appropriately challenging for your academic level?	96
3	How well do you feel the curriculum prepares you for future academic or career pursuits?	94
4	Are there any specific topics or subjects you believe should be added or expanded within the curriculum?	93
5	Do you feel that the curriculum provides a good balance between theoretical knowledge and practical application?	95
6	Are the assessment methods (exams, assignments, projects) used in the curriculum effective in evaluating your understanding of the course material?	93
7	How satisfied are you with the availability and accessibility of resources (e.g., library, online materials) related to your curriculum?	93
8	Are there any concerns about the pace at which the curriculum is delivered? Is it too fast, too slow, or just right?	96
9	Are there opportunities for you to provide input or suggestions for improvements to the curriculum, and if so, have you taken advantage of them?	94
10	Overall, how would you rate the quality and relevance of the curriculum to your educational goals and aspirations?	95

### STUDENT FEEDBACK ANALYSIS ON CURRICULUM DESIGN A.Y.2022-23



  
IQAC COORDINATOR

  
PRINCIPAL

# PYDAH COLLEGE OF PHARMACY

(Approved by PCI, AICTE and Affiliated to Andhra University, Visakhapatnam)

Yanam Road, PATAVALA, KAKINADA-533461, E.G.Dt

Telephone: 0884-2315344/45 Email id: princpharma@pydah.edu.in website: www.pydahpharmacy.edu.in



Education & Beyond

## TEACHERS FEEDBACK ON CURRICULUM ACADEMIC YEAR 2022-23

### 1. OBJECTIVE OF FEEDBACK

The college is affiliated to Andhra University, Visakhapatnam. The syllabus finalized by AU is implemented in the affiliated colleges. The IQAC of the college identifies the curricular gaps and plans for co-curricular/extracurricular activities in college. The college obtains feedback from all the stakeholders like students, alumni, employer and teachers on curriculum/syllabus to enrich the quality of activities performed in college for improvement of the professional skills, employability and entrepreneurial skills of the students.

### 2. SUMMARY OF FEEDBACK OBTAINED

S.NO	STAKEHOLDERS	NO. OF SAMPLE FEEDBACKS ANALYSED
1	Students	05
2	Teachers	04
3	Alumni	03
4	Employers	05

3. The feedback on curriculum was taken from the students of all years, Teachers, Alumni, and Employers at the end of each academic year.

  
IQAC COORDINATOR

  
PRINCIPAL



# PYDAH COLLEGE OF PHARMACY

(Approved by PCI, AICTE and Affiliated to Andhra University, Visakhapatnam)

Yanam Road, PATAVALA, KAKINADA-533461, E.G.Dt

Telephone: 0884-2315344/45 Email id: princpharma@pydah.edu.in website: www.pydahpharmacy.edu.in

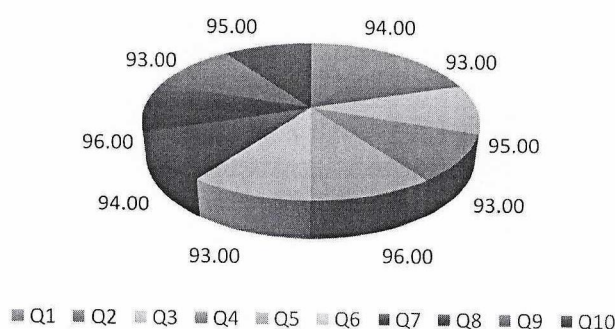


Education & Beyond

## TEACHERS FEEDBACK AND ANALYSIS ON CURRICULUM DESIGN 2022-23

S.No	QUESTIONNAIRE	FEEDBACK %
1	How well do you think the current curriculum aligns with the educational goals and objectives of our Institution?	94
2	Are there any specific topics or areas within the curriculum that you believe require further development or improvement?	93
3	How effectively does the curriculum cater to the diverse learning needs and abilities of our students?	95
4	Do you feel that the curriculum provides adequate opportunities for student engagement and active learning?	93
5	Are the learning resources and materials provided as part of the curriculum up-to-date and relevant to the subject matter?	96
6	In your opinion, does the curriculum encourage critical thinking, problem-solving, and creativity among students?	93
7	Have you encountered any challenges or difficulties in delivering the curriculum?	94
8	Are there any suggestions or recommendations you have for enhancing the curriculum to better meet the needs of our students?	96
9	How well does the curriculum incorporate real-world applications and practical skills relevant to the subject?	93
10	What strategies or changes, if any, would you suggest to make the curriculum more engaging and motivating for both teachers and students?	95

### TEACHER FEEDBACK ANALYSIS ON CURRICULUM DESIGN A.Y.2022-23



  
IQAC COORDINATOR

  
PRINCIPAL

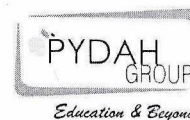


# PYDAH COLLEGE OF PHARMACY

(Approved by PCI, AICTE and Affiliated to Andhra University, Visakhapatnam)

Yanam Road, PATAVALA, KAKINADA-533461, E.G.Dt

Telephone: 0884-2315344/45 Email id: princpharma@pydah.edu.in website: www.pydahpharmacy.edu.in



## EMPLOYER FEEDBACK ON CURRICULUM ACADEMIC YEAR 2022-23

### 1. OBJECTIVE OF FEEDBACK

The college is affiliated to Andhra University, Visakhapatnam. The syllabus finalized by AU is implemented in the affiliated colleges. The IQAC of the college identifies the curricular gaps and plans for co-curricular/extracurricular activities in college. The college obtains feedback from all the stakeholders like students, alumni, employer and teachers on curriculum/syllabus to enrich the quality of activities performed in college for improvement of the professional skills, employability and entrepreneurial skills of the students.

### 2. SUMMARY OF FEEDBACK OBTAINED

S.NO	STAKEHOLDERS	NO. OF SAMPLE FEEDBACKS ANALYSED
1	Students	05
2	Teachers	04
3	Alumni	03
4	Employers	05

3. The feedback on curriculum was taken from the students of all years, Teachers, Alumni, and Employers at the end of each academic year.

**IQAC COORDINATOR**

**PRINCIPAL**

# PYDAH COLLEGE OF PHARMACY

(Approved by PCI, AICTE and Affiliated to Andhra University, Visakhapatnam)

Yanam Road, PATAVALA, KAKINADA-533461, E.G.Dt

Telephone: 0884-2315344/45 Email id: princpharma@pydah.edu.in website: www.pydahpharmacy.edu.in

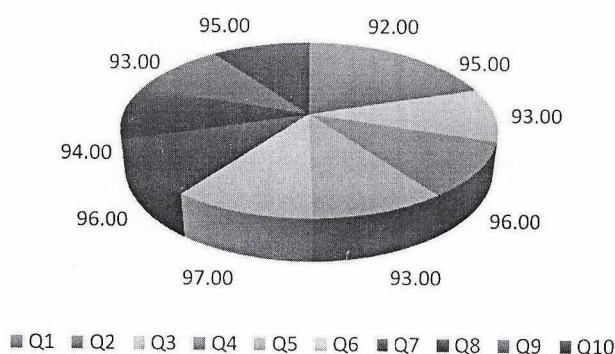


Education & Beyond

## EMPLOYER FEEDBACK AND ANALYSIS ON CURRICULUM DESIGN 2022-23

S.No	QUESTIONNAIRE	FEEDBACK %
1	How well do you think our graduates' skills and knowledge align with the current industry requirements?	92
2	Are there any specific areas of our curriculum that you believe require improvement to better prepare students for the workforce?	95
3	Do you find that our curriculum adequately covers the latest technological advancements and industry trends?	93
4	Are there any particular courses or subjects within our curriculum that you think are exceptionally beneficial to our graduates?	96
5	Are there any gaps in our curriculum that you believe should be addressed to enhance graduates' employability?	93
6	How well do our graduates demonstrate critical thinking and problem-solving skills, as taught in our curriculum?	97
7	Do you think our curriculum effectively integrates practical, hands-on experiences and real-world applications?	96
8	Are there any soft skills or non-technical competencies you feel our curriculum should focus on developing in our students?	94
9	How would you rate the overall adaptability and flexibility of our curriculum in response to changing industry needs?	93
10	In your opinion, does our curriculum adequately prepare students for leadership roles and ethical decision-making in the workplace?	95

### EMPLOYER FEEDBACK ANALYSIS ON CURRICULUM DESIGN A.Y.2022-23



  
IQAC COORDINATOR

  
PRINCIPAL

# PYDAH COLLEGE OF PHARMACY

(Approved by PCI, AICTE and Affiliated to Andhra University, Visakhapatnam)

Yanam Road, PATAVALA, KAKINADA-533461, E.G.Dt

Telephone: 0884-2315344/45 Email id: princpharma@pydah.edu.in website: www.pydahpharmacy.edu.in



Education & Beyond

## ALUMNI FEEDBACK ON CURRICULUM ACADEMIC YEAR 2022-23

### 1. OBJECTIVE OF FEEDBACK

The college is affiliated to Andhra University, Visakhapatnam. The syllabus finalized by AU is implemented in the affiliated colleges. The IQAC of the college identifies the curricular gaps and plans for co-curricular/extracurricular activities in college. The college obtains feedback from all the stakeholders like students, alumni, employer and teachers on curriculum/syllabus to enrich the quality of activities performed in college for improvement of the professional skills, employability and entrepreneurial skills of the students.

### 2. SUMMARY OF FEEDBACK OBTAINED

S.No	STAKEHOLDERS	NO. OF SAMPLE FEEDBACKS ANALYSED
1	Students	05
2	Teachers	04
3	Alumni	03
4	Employers	05

3. The feedback on curriculum was taken from the students of all years, Teachers, Alumni, and Employers at the end of each academic year.

  
IQAC COORDINATOR

  
PRINCIPAL



# PYDAH COLLEGE OF PHARMACY

(Approved by PCI, AICTE and Affiliated to Andhra University, Visakhapatnam)

Yanam Road, PATAVALA, KAKINADA-533461, E.G.Dt

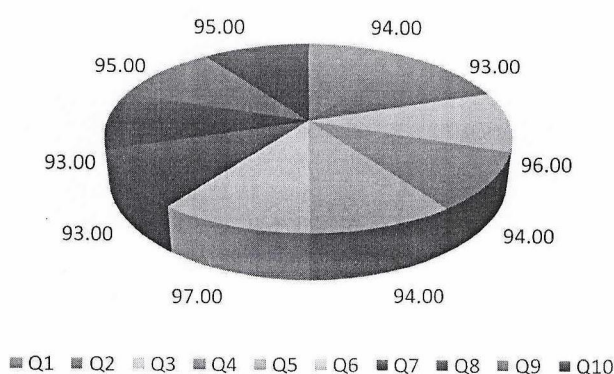
Telephone: 0884-2315344/45 Email id: princpharma@pydah.edu.in website: www.pydahpharmacy.edu.in



## ALUMNI FEEDBACK AND ANALYSIS ON CURRICULUM DESIGN 2022-23

S.NO	QUESTIONNAIRE	FEEDBACK %
1	How well did the curriculum prepare you for your post-graduation career or further studies?	94
2	Were there any specific courses or subjects in the curriculum that you found particularly valuable in your professional life?	93
3	Did you feel that the curriculum adequately covered both theoretical and practical aspects of your field of study?	96
4	Were there any areas in the curriculum where you felt improvements could be made to better prepare students for real-world challenges?	94
5	Did you find the curriculum to be up-to-date with industry trends and advancements in your field?	94
6	How did the curriculum incorporate opportunities for interdisciplinary learning and skill development?	97
7	Were there any elective courses or specializations that you wish had been offered during your time at the institution?	93
8	Did you have access to sufficient resources and support for pursuing independent research or projects related to your curriculum?	93
9	How did the curriculum foster critical thinking, problem-solving, and creativity in your academic journey?	95
10	In retrospect, what advice would you give to current students regarding how to make the most of the curriculum and educational opportunities available?	95

### ALUMNI FEEDBACK ANALYSIS ON CURRICULUM DESIGN A.Y.2022-23



  
IQAC COORDINATOR

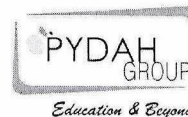
  
PRINCIPAL

# PYDAH COLLEGE OF PHARMACY

(Approved by PCI, AICTE and Affiliated to Andhra University, Visakhapatnam)

Yanam Road, PATAVALA, KAKINADA-533461, E.G.Dt

Telephone: 0884-2315344/45 Email id: princpharma@pydah.edu.in website: www.pydahpharmacy.edu.in



## STUDENT FEEDBACK ON CURRICULUM ACADEMIC YEAR 2021-22

### 1. OBJECTIVE OF FEEDBACK

The college is affiliated to Andhra University, Visakhapatnam. The syllabus finalized by AU is implemented in the affiliated colleges. The IQAC of the college identifies the curricular gaps and plans for co-curricular/extracurricular activities in college. The college obtains feedback from all the stakeholders like students, alumni, employer and teachers on curriculum/syllabus to enrich the quality of activities performed in college for improvement of the professional skills, employability and entrepreneurial skills of the students.

### 2. SUMMARY OF FEEDBACK OBTAINED

S.NO	STAKEHOLDERS	NO. OF SAMPLE FEEDBACKS ANALYSED
1	Students	05
2	Teachers	03
3	Alumni	04
4	Employers	02

3. The feedback on curriculum was taken from the students of all years, Teachers, Alumni, and Employers at the end of each academic year.

  
IQAC COORDINATOR

  
PRINCIPAL

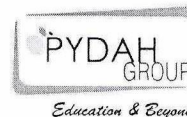


# PYDAH COLLEGE OF PHARMACY

(Approved by PCI, AICTE and Affiliated to Andhra University, Visakhapatnam)

Yanam Road, PATAVALA, KAKINADA-533461, E.G.Dt

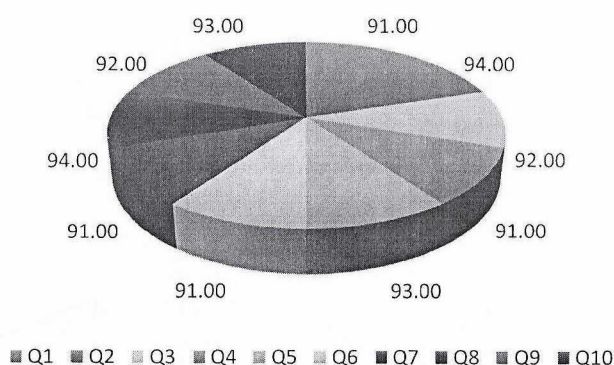
Telephone: 0884-2315344/45 Email id: princpharma@pydah.edu.in website: www.pydahpharmacy.edu.in



## STUDENT FEEDBACK AND ANALYSIS ON CURRICULUM DESIGN 2021-22

S.No	QUESTIONNAIRE	FEEDBACK %
1	Are the course materials and textbooks provided aligned with the learning objectives of the curriculum?	91
2	Do you find the curriculum to be appropriately challenging for your academic level?	94
3	How well do you feel the curriculum prepares you for future academic or career pursuits?	92
4	Are there any specific topics or subjects you believe should be added or expanded within the curriculum?	91
5	Do you feel that the curriculum provides a good balance between theoretical knowledge and practical application?	93
6	Are the assessment methods (exams, assignments, projects) used in the curriculum effective in evaluating your understanding of the course material?	91
7	How satisfied are you with the availability and accessibility of resources (e.g., library, online materials) related to your curriculum?	91
8	Are there any concerns about the pace at which the curriculum is delivered? Is it too fast, too slow, or just right?	94
9	Are there opportunities for you to provide input or suggestions for improvements to the curriculum, and if so, have you taken advantage of them?	92
10	Overall, how would you rate the quality and relevance of the curriculum to your educational goals and aspirations?	93

### STUDENT FEEDBACK ANALYSIS ON CURRICULUM DESIGN A.Y.2021-22



  
IQAC COORDINATOR

  
PRINCIPAL



# PYDAH COLLEGE OF PHARMACY

(Approved by PCI, AICTE and Affiliated to Andhra University, Visakhapatnam)

Yanam Road, PATAVALA, KAKINADA-533461, E.G.Dt

Telephone: 0884-2315344/45 Email id: princpharma@pydah.edu.in website: www.pydahpharmacy.edu.in



Education & Beyond

## TEACHERS FEEDBACK ON CURRICULUM ACADEMIC YEAR 2021-22

### 1. OBJECTIVE OF FEEDBACK

The college is affiliated to Andhra University, Visakhapatnam. The syllabus finalized by AU is implemented in the affiliated colleges. The IQAC of the college identifies the curricular gaps and plans for co-curricular/extracurricular activities in college. The college obtains feedback from all the stakeholders like students, alumni, employer and teachers on curriculum/syllabus to enrich the quality of activities performed in college for improvement of the professional skills, employability and entrepreneurial skills of the students.

### 2. SUMMARY OF FEEDBACK OBTAINED

S.NO	STAKEHOLDERS	NO. OF SAMPLE FEEDBACKS ANALYSED
1	Students	05
2	Teachers	03
3	Alumni	04
4	Employers	02

3. The feedback on curriculum was taken from the students of all years, Teachers, Alumni, and Employers at the end of each academic year.

IQAC COORDINATOR

PRINCIPAL

# PYDAH COLLEGE OF PHARMACY

(Approved by PCI, AICTE and Affiliated to Andhra University, Visakhapatnam)

Yanam Road, PATAVALA, KAKINADA-533461, E.G.Dt

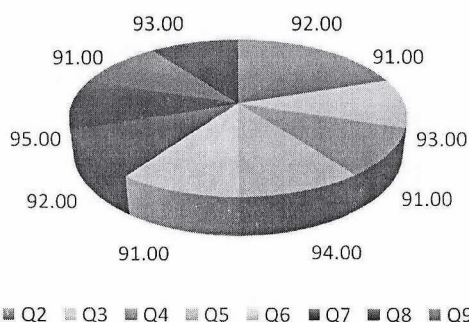
Telephone: 0884-2315344/45 Email id: princpharma@pydah.edu.in website: www.pydahpharmacy.edu.in



## TEACHERS FEEDBACK AND ANALYSIS ON CURRICULUM DESIGN 2021-22

S.No	QUESTIONNAIRE	FEEDBACK %
1	How well do you think the current curriculum aligns with the educational goals and objectives of our Institution?	92
2	Are there any specific topics or areas within the curriculum that you believe require further development or improvement?	91
3	How effectively does the curriculum cater to the diverse learning needs and abilities of our students?	93
4	Do you feel that the curriculum provides adequate opportunities for student engagement and active learning?	91
5	Are the learning resources and materials provided as part of the curriculum up-to-date and relevant to the subject matter?	94
6	In your opinion, does the curriculum encourage critical thinking, problem-solving, and creativity among students?	91
7	Have you encountered any challenges or difficulties in delivering the curriculum?	92
8	Are there any suggestions or recommendations you have for enhancing the curriculum to better meet the needs of our students?	95
9	How well does the curriculum incorporate real-world applications and practical skills relevant to the subject?	91
10	What strategies or changes, if any, would you suggest to make the curriculum more engaging and motivating for both teachers and students?	93

### TEACHER FEEDBACK ANALYSIS ON CURRICULUM DESIGN A.Y.2021-22



  
IQAC COORDINATOR

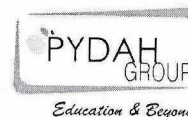
  
PRINCIPAL

# PYDAH COLLEGE OF PHARMACY

(Approved by PCI, AICTE and Affiliated to Andhra University, Visakhapatnam)

Yanam Road, PATAVALA, KAKINADA-533461, E.G.Dt

Telephone: 0884-2315344/45 Email id: princpharma@pydah.edu.in website: www.pydahpharmacy.edu.in



## EMPLOYER FEEDBACK ON CURRICULUM ACADEMIC YEAR 2021-22

### 1. OBJECTIVE OF FEEDBACK

The college is affiliated to Andhra University, Visakhapatnam. The syllabus finalized by AU is implemented in the affiliated colleges. The IQAC of the college identifies the curricular gaps and plans for co-curricular/extracurricular activities in college. The college obtains feedback from all the stakeholders like students, alumni, employer and teachers on curriculum/syllabus to enrich the quality of activities performed in college for improvement of the professional skills, employability and entrepreneurial skills of the students.

### 2. SUMMARY OF FEEDBACK OBTAINED

S.NO	STAKEHOLDERS	NO. OF SAMPLE FEEDBACKS ANALYSED
1	Students	05
2	Teachers	03
3	Alumni	04
4	Employers	02

3. The feedback on curriculum was taken from the students of all years, Teachers, Alumni, and Employers at the end of each academic year.

  
IQAC COORDINATOR

  
PRINCIPAL



# PYDAH COLLEGE OF PHARMACY

(Approved by PCI, AICTE and Affiliated to Andhra University, Visakhapatnam)

Yanam Road, PATAVALA, KAKINADA-533461, E.G.Dt

Telephone: 0884-2315344/45 Email id: princpharma@pydah.edu.in website: www.pydahpharmacy.edu.in

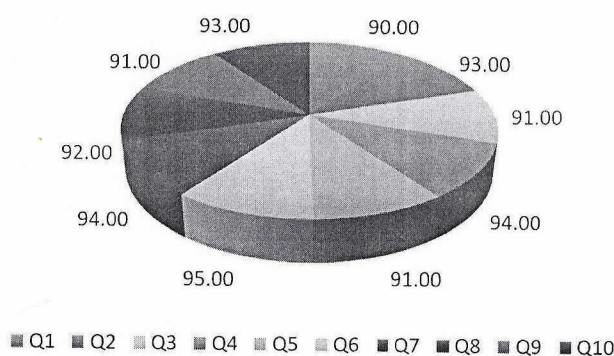


Education & Beyond

## EMPLOYER FEEDBACK AND ANALYSIS ON CURRICULUM DESIGN 2021-22

S.No	QUESTIONNAIRE	FEEDBACK %
1	How well do you think our graduates' skills and knowledge align with the current industry requirements?	90
2	Are there any specific areas of our curriculum that you believe require improvement to better prepare students for the workforce?	93
3	Do you find that our curriculum adequately covers the latest technological advancements and industry trends?	91
4	Are there any particular courses or subjects within our curriculum that you think are exceptionally beneficial to our graduates?	94
5	Are there any gaps in our curriculum that you believe should be addressed to enhance graduates' employability?	91
6	How well do our graduates demonstrate critical thinking and problem-solving skills, as taught in our curriculum?	95
7	Do you think our curriculum effectively integrates practical, hands-on experiences and real-world applications?	94
8	Are there any soft skills or non-technical competencies you feel our curriculum should focus on developing in our students?	92
9	How would you rate the overall adaptability and flexibility of our curriculum in response to changing industry needs?	91
10	In your opinion, does our curriculum adequately prepare students for leadership roles and ethical decision-making in the workplace?	93

### EMPLOYER FEEDBACK ANALYSIS ON CURRICULUM DESIGN A.Y.2021-22



  
IQAC COORDINATOR

  
PRINCIPAL

# PYDAH COLLEGE OF PHARMACY

(Approved by PCI, AICTE and Affiliated to Andhra University, Visakhapatnam)

Yanam Road, PATAVALA, KAKINADA-533461, E.G.Dt

Telephone: 0884-2315344/45 Email id: princpharma@pydah.edu.in website: www.pydahpharmacy.edu.in



## ALUMNI FEEDBACK ON CURRICULUM ACADEMIC YEAR 2021-22

### 1. OBJECTIVE OF FEEDBACK

The college is affiliated to Andhra University, Visakhapatnam. The syllabus finalized by AU is implemented in the affiliated colleges. The IQAC of the college identifies the curricular gaps and plans for co-curricular/extracurricular activities in college. The college obtains feedback from all the stakeholders like students, alumni, employer and teachers on curriculum/syllabus to enrich the quality of activities performed in college for improvement of the professional skills, employability and entrepreneurial skills of the students.

### 2. SUMMARY OF FEEDBACK OBTAINED

S.No	STAKEHOLDERS	NO. OF SAMPLE FEEDBACKS ANALYSED
1	Students	05
2	Teachers	03
3	Alumni	04
4	Employers	02

3. The feedback on curriculum was taken from the students of all years, Teachers, Alumni, and Employers at the end of each academic year.

IQAC COORDINATOR

PRINCIPAL



# PYDAH COLLEGE OF PHARMACY

(Approved by PCI, AICTE and Affiliated to Andhra University, Visakhapatnam)

Yanam Road, PATAVALA, KAKINADA-533461, E.G.Dt

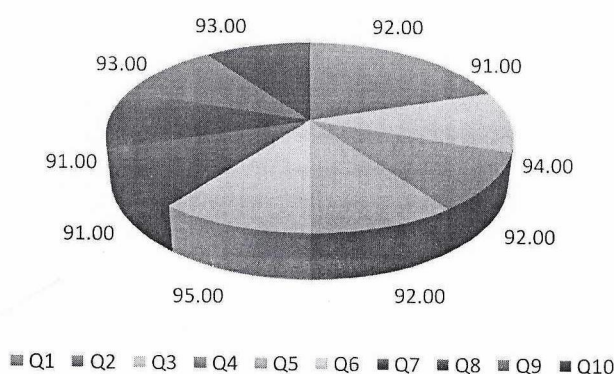
Telephone: 0884-2315344/45 Email id: princpharma@pydah.edu.in website: www.pydahpharmacy.edu.in



## ALUMNI FEEDBACK AND ANALYSIS ON CURRICULUM DESIGN 2021-22

S.NO	QUESTIONNAIRE	FEEDBACK %
1	How well did the curriculum prepare you for your post-graduation career or further studies?	92
2	Were there any specific courses or subjects in the curriculum that you found particularly valuable in your professional life?	91
3	Did you feel that the curriculum adequately covered both theoretical and practical aspects of your field of study?	94
4	Were there any areas in the curriculum where you felt improvements could be made to better prepare students for real-world challenges?	92
5	Did you find the curriculum to be up-to-date with industry trends and advancements in your field?	92
6	How did the curriculum incorporate opportunities for interdisciplinary learning and skill development?	95
7	Were there any elective courses or specializations that you wish had been offered during your time at the institution?	91
8	Did you have access to sufficient resources and support for pursuing independent research or projects related to your curriculum?	91
9	How did the curriculum foster critical thinking, problem-solving, and creativity in your academic journey?	93
10	In retrospect, what advice would you give to current students regarding how to make the most of the curriculum and educational opportunities available?	93

**ALUMNI FEEDBACK ANALYSIS ON CURRICULUM DESIGN A.Y.2021-22**



*[Signature]*  
IQAC COORDINATOR

*[Signature]*  
PRINCIPAL

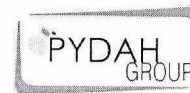


# PYDAH COLLEGE OF PHARMACY

(Approved by PCI, AICTE and Affiliated to Andhra University, Visakhapatnam)

Yanam Road, PATAVALA, KAKINADA-533461, E.G.Dt

Telephone: 0884-2315344/45 Email id: princpharma@pydah.edu.in website: www.pydahpharmacy.edu.in



Education & Beyond

## STUDENT FEEDBACK ON CURRICULUM ACADEMIC YEAR 2020-21

### 1. OBJECTIVE OF FEEDBACK

The college is affiliated to Andhra University, Visakhapatnam. The syllabus finalized by AU is implemented in the affiliated colleges. The College Academic Committee identifies the curricular gaps and plans for co-curricular/extracurricular activities in college. The college obtains feedback from all the stakeholders like students, alumni, employer and teachers on curriculum/syllabus to enrich the quality of activities performed in college for improvement of the professional skills, employability and entrepreneurial skills of the students.

### 2. SUMMARY OF FEEDBACK OBTAINED

S.NO	STAKEHOLDERS	NO. OF SAMPLE FEEDBACKS ANALYSED
1	Students	08
2	Teachers	04
3	Alumni	04
4	Employers	03

3. The feedback on curriculum was taken from the students of all years, Teachers, Alumni, and Employers at the end of each academic year.

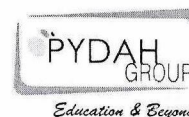
  
PRINCIPAL

# PYDAH COLLEGE OF PHARMACY

(Approved by PCI, AICTE and Affiliated to Andhra University, Visakhapatnam)

Yanam Road, PATAVALA, KAKINADA-533461, E.G.Dt

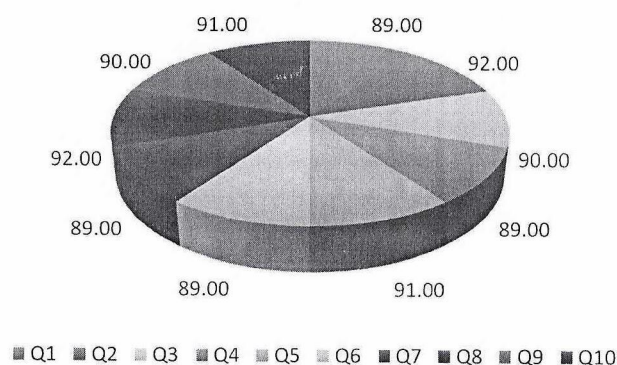
Telephone: 0884-2315344/45 Email id: princpharma@pydah.edu.in website: www.pydahpharmacy.edu.in



## STUDENT FEEDBACK AND ANALYSIS ON CURRICULUM DESIGN 2020-21

S.No	QUESTIONNAIRE	FEEDBACK %
1	Are the course materials and textbooks provided aligned with the learning objectives of the curriculum?	89
2	Do you find the curriculum to be appropriately challenging for your academic level?	92
3	How well do you feel the curriculum prepares you for future academic or career pursuits?	90
4	Are there any specific topics or subjects you believe should be added or expanded within the curriculum?	89
5	Do you feel that the curriculum provides a good balance between theoretical knowledge and practical application?	91
6	Are the assessment methods (exams, assignments, projects) used in the curriculum effective in evaluating your understanding of the course material?	89
7	How satisfied are you with the availability and accessibility of resources (e.g., library, online materials) related to your curriculum?	89
8	Are there any concerns about the pace at which the curriculum is delivered? Is it too fast, too slow, or just right?	92
9	Are there opportunities for you to provide input or suggestions for improvements to the curriculum, and if so, have you taken advantage of them?	90
10	Overall, how would you rate the quality and relevance of the curriculum to your educational goals and aspirations?	91

**STUDENT FEEDBACK ANALYSIS ON CURRICULUM DESIGN A.Y.2020-21**



*[Signature]*  
PRINCIPAL

# PYDAH COLLEGE OF PHARMACY

(Approved by PCI, AICTE and Affiliated to Andhra University, Visakhapatnam)

Yanam Road, PATAVALA, KAKINADA-533461, E.G.Dt

Telephone: 0884-2315344/45 Email id: princpharma@pydah.edu.in website: www.pydahpharmacy.edu.in



## TEACHERS FEEDBACK ON CURRICULUM ACADEMIC YEAR 2020-21

### 1. OBJECTIVE OF FEEDBACK

The college is affiliated to Andhra University, Visakhapatnam. The syllabus finalized by AU is implemented in the affiliated colleges. The College Academic Committee identifies the curricular gaps and plans for co-curricular/extracurricular activities in college. The college obtains feedback from all the stakeholders like students, alumni, employer and teachers on curriculum/syllabus to enrich the quality of activities performed in college for improvement of the professional skills, employability and entrepreneurial skills of the students.

### 2. SUMMARY OF FEEDBACK OBTAINED

S.NO	STAKEHOLDERS	NO. OF SAMPLE FEEDBACKS ANALYSED
1	Students	08
2	Teachers	04
3	Alumni	04
4	Employers	03

3. The feedback on curriculum was taken from the students of all years, Teachers, Alumni, and Employers at the end of each academic year.

  
PRINCIPAL

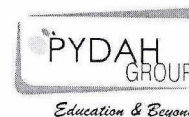


# PYDAH COLLEGE OF PHARMACY

(Approved by PCI, AICTE and Affiliated to Andhra University, Visakhapatnam)

Yanam Road, PATAVALA, KAKINADA-533461, E.G.Dt

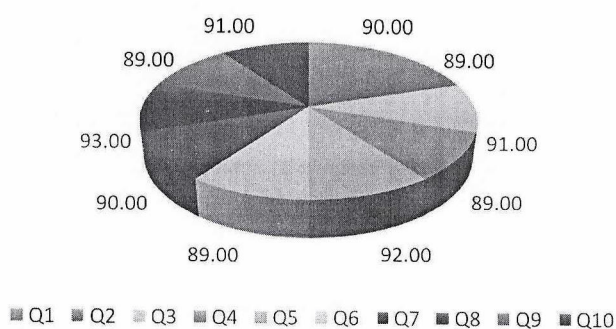
Telephone: 0884-2315344/45 Email id: princpharma@pydah.edu.in website: www.pydahpharmacy.edu.in



## TEACHERS FEEDBACK AND ANALYSIS ON CURRICULUM DESIGN 2020-21

S.No	QUESTIONNAIRE	FEEDBACK %
1	How well do you think the current curriculum aligns with the educational goals and objectives of our Institution?	90
2	Are there any specific topics or areas within the curriculum that you believe require further development or improvement?	89
3	How effectively does the curriculum cater to the diverse learning needs and abilities of our students?	91
4	Do you feel that the curriculum provides adequate opportunities for student engagement and active learning?	89
5	Are the learning resources and materials provided as part of the curriculum up-to-date and relevant to the subject matter?	92
6	In your opinion, does the curriculum encourage critical thinking, problem-solving, and creativity among students?	89
7	Have you encountered any challenges or difficulties in delivering the curriculum?	90
8	Are there any suggestions or recommendations you have for enhancing the curriculum to better meet the needs of our students?	93
9	How well does the curriculum incorporate real-world applications and practical skills relevant to the subject?	89
10	What strategies or changes, if any, would you suggest to make the curriculum more engaging and motivating for both teachers and students?	91

**TEACHER FEEDBACK ANALYSIS ON CURRICULUM DESIGN A.Y.2020-21**



*[Handwritten Signature]*  
PRINCIPAL

# PYDAH COLLEGE OF PHARMACY

(Approved by PCI, AICTE and Affiliated to Andhra University, Visakhapatnam)

Yanam Road, PATAVALA, KAKINADA-533461, E.G.Dt

Telephone: 0884-2315344/45 Email id: princpharma@pydah.edu.in website: www.pydahpharmacy.edu.in



## EMPLOYER FEEDBACK ON CURRICULUM ACADEMIC YEAR 2020-21

### 1. OBJECTIVE OF FEEDBACK

The college is affiliated to Andhra University, Visakhapatnam. The syllabus finalized by AU is implemented in the affiliated colleges. The College Academic Committee identifies the curricular gaps and plans for co-curricular/extracurricular activities in college. The college obtains feedback from all the stakeholders like students, alumni, employer and teachers on curriculum/syllabus to enrich the quality of activities performed in college for improvement of the professional skills, employability and entrepreneurial skills of the students.

### 2. SUMMARY OF FEEDBACK OBTAINED

S.NO	STAKEHOLDERS	NO. OF SAMPLE FEEDBACKS ANALYSED
1	Students	08
2	Teachers	04
3	Alumni	04
4	Employers	03

3. The feedback on curriculum was taken from the students of all years, Teachers, Alumni, and Employers at the end of each academic year.

  
PRINCIPAL



# PYDAH COLLEGE OF PHARMACY

(Approved by PCI, AICTE and Affiliated to Andhra University, Visakhapatnam)

Yanam Road, PATAVALA, KAKINADA-533461, E.G.Dt

Telephone: 0884-2315344/45 Email id: princpharma@pydah.edu.in website: www.pydahpharmacy.edu.in

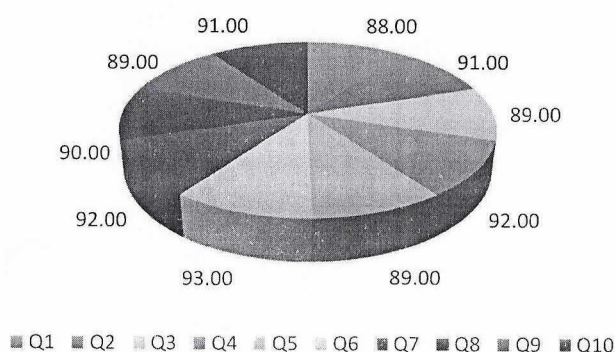


Education & Beyond

## EMPLOYER FEEDBACK AND ANALYSIS ON CURRICULUM DESIGN 2020-21

S.No	QUESTIONNAIRE	FEEDBACK %
1	How well do you think our graduates' skills and knowledge align with the current industry requirements?	88
2	Are there any specific areas of our curriculum that you believe require improvement to better prepare students for the workforce?	91
3	Do you find that our curriculum adequately covers the latest technological advancements and industry trends?	89
4	Are there any particular courses or subjects within our curriculum that you think are exceptionally beneficial to our graduates?	92
5	Are there any gaps in our curriculum that you believe should be addressed to enhance graduates' employability?	89
6	How well do our graduates demonstrate critical thinking and problem-solving skills, as taught in our curriculum?	93
7	Do you think our curriculum effectively integrates practical, hands-on experiences and real-world applications?	92
8	Are there any soft skills or non-technical competencies you feel our curriculum should focus on developing in our students?	90
9	How would you rate the overall adaptability and flexibility of our curriculum in response to changing industry needs?	89
10	In your opinion, does our curriculum adequately prepare students for leadership roles and ethical decision-making in the workplace?	91

**EMPLOYER FEEDBACK ANALYSIS ON CURRICULUM DESIGN A.Y.2020-21**



*[Signature]*  
PRINCIPAL



# PYDAH COLLEGE OF PHARMACY

(Approved by PCI, AICTE and Affiliated to Andhra University, Visakhapatnam)

Yanam Road, PATAVALA, KAKINADA-533461, E.G.Dt

Telephone: 0884-2315344/45 Email id: princpharma@pydah.edu.in website: www.pydahpharmacy.edu.in



## ALUMNI FEEDBACK ON CURRICULUM ACADEMIC YEAR 2020-21

### 1. OBJECTIVE OF FEEDBACK

The college is affiliated to Andhra University, Visakhapatnam. The syllabus finalized by AU is implemented in the affiliated colleges. The College Academic Committee identifies the curricular gaps and plans for co-curricular/extracurricular activities in college. The college obtains feedback from all the stakeholders like students, alumni, employer and teachers on curriculum/syllabus to enrich the quality of activities performed in college for improvement of the professional skills, employability and entrepreneurial skills of the students.

### 2. SUMMARY OF FEEDBACK OBTAINED

S.No	STAKEHOLDERS	NO. OF SAMPLE FEEDBACKS ANALYSED
1	Students	08
2	Teachers	04
3	Alumni	04
4	Employers	03

3. The feedback on curriculum was taken from the students of all years, Teachers, Alumni, and Employers at the end of each academic year.

  
PRINCIPAL

# PYDAH COLLEGE OF PHARMACY

(Approved by PCI, AICTE and Affiliated to Andhra University, Visakhapatnam)

Yanam Road, PATAVALA, KAKINADA-533461, E.G.Dt

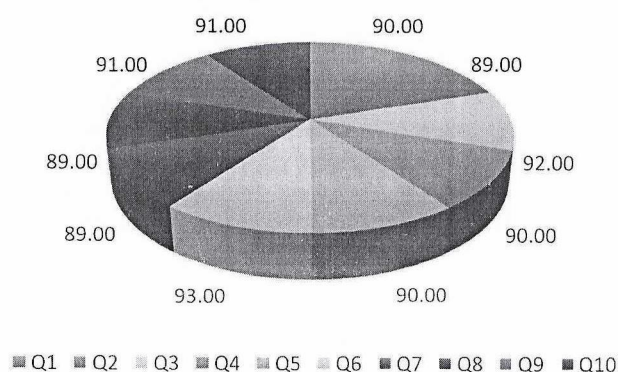
Telephone: 0884-2315344/45 Email id: princpharma@pydah.edu.in website: www.pydahpharmacy.edu.in



## ALUMNI FEEDBACK AND ANALYSIS ON CURRICULUM DESIGN 2020-21

S.NO	QUESTIONNAIRE	FEEDBACK %
1	How well did the curriculum prepare you for your post-graduation career or further studies?	90
2	Were there any specific courses or subjects in the curriculum that you found particularly valuable in your professional life?	89
3	Did you feel that the curriculum adequately covered both theoretical and practical aspects of your field of study?	92
4	Were there any areas in the curriculum where you felt improvements could be made to better prepare students for real-world challenges?	90
5	Did you find the curriculum to be up-to-date with industry trends and advancements in your field?	90
6	How did the curriculum incorporate opportunities for interdisciplinary learning and skill development?	93
7	Were there any elective courses or specializations that you wish had been offered during your time at the institution?	89
8	Did you have access to sufficient resources and support for pursuing independent research or projects related to your curriculum?	89
9	How did the curriculum foster critical thinking, problem-solving, and creativity in your academic journey?	91
10	In retrospect, what advice would you give to current students regarding how to make the most of the curriculum and educational opportunities available?	91

**ALUMNI FEEDBACK ANALYSIS ON CURRICULUM DESIGN A.Y.2020-21**



*[Signature]*  
PRINCIPAL

# PYDAH COLLEGE OF PHARMACY

(Approved by PCI, AICTE and Affiliated to Andhra University, Visakhapatnam)

Yanam Road, PATAVALA, KAKINADA-533461, E.G.Dt

Telephone: 0884-2315344/45 Email id: princpharma@pydah.edu.in website: www.pydahpharmacy.edu.in



## STUDENT FEEDBACK ON CURRICULUM ACADEMIC YEAR 2019-20

### 1. OBJECTIVE OF FEEDBACK

The college is affiliated to Andhra University, Visakhapatnam. The syllabus finalized by AU is implemented in the affiliated colleges. The College Academic Committee identifies the curricular gaps and plans for co-curricular/extracurricular activities in college. The college obtains feedback from all the stakeholders like students, alumni, employer and teachers on curriculum/syllabus to enrich the quality of activities performed in college for improvement of the professional skills, employability and entrepreneurial skills of the students.

### 2. SUMMARY OF FEEDBACK OBTAINED

S.NO	STAKEHOLDERS	NO. OF SAMPLE FEEDBACKS ANALYSED
1	Students	05
2	Teachers	05
3	Alumni	03
4	Employers	04

3. The feedback on curriculum was taken from the students of all years, Teachers, Alumni, and Employers at the end of each academic year.

  
PRINCIPAL



# PYDAH COLLEGE OF PHARMACY

(Approved by PCI, AICTE and Affiliated to Andhra University, Visakhapatnam)

Yanam Road, PATAVALA, KAKINADA-533461, E.G.Dt

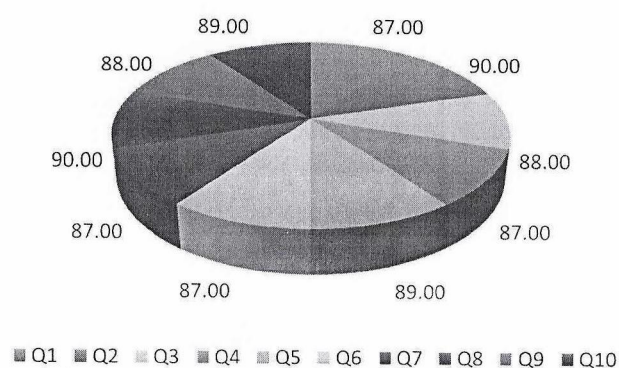
Telephone: 0884-2315344/45 Email id: princpharma@pydah.edu.in website: www.pydahpharmacy.edu.in



## STUDENT FEEDBACK AND ANALYSIS ON CURRICULUM DESIGN 2019-20

S.No	QUESTIONNAIRE	FEEDBACK %
1	Are the course materials and textbooks provided aligned with the learning objectives of the curriculum?	87
2	Do you find the curriculum to be appropriately challenging for your academic level?	90
3	How well do you feel the curriculum prepares you for future academic or career pursuits?	88
4	Are there any specific topics or subjects you believe should be added or expanded within the curriculum?	87
5	Do you feel that the curriculum provides a good balance between theoretical knowledge and practical application?	89
6	Are the assessment methods (exams, assignments, projects) used in the curriculum effective in evaluating your understanding of the course material?	87
7	How satisfied are you with the availability and accessibility of resources (e.g., library, online materials) related to your curriculum?	87
8	Are there any concerns about the pace at which the curriculum is delivered? Is it too fast, too slow, or just right?	90
9	Are there opportunities for you to provide input or suggestions for improvements to the curriculum, and if so, have you taken advantage of them?	88
10	Overall, how would you rate the quality and relevance of the curriculum to your educational goals and aspirations?	89

**STUDENT FEEDBACK ANALYSIS ON CURRICULUM DESIGN A.Y.2019-20**



*[Handwritten Signature]*  
PRINCIPAL

# PYDAH COLLEGE OF PHARMACY

(Approved by PCI, AICTE and Affiliated to Andhra University, Visakhapatnam)

Yanam Road, PATAVALA, KAKINADA-533461, E.G.Dt

Telephone: 0884-2315344/45 Email id: princpharma@pydah.edu.in website: www.pydahpharmacy.edu.in



## TEACHERS FEEDBACK ON CURRICULUM ACADEMIC YEAR 2019-20

### 1. OBJECTIVE OF FEEDBACK

The college is affiliated to Andhra University, Visakhapatnam. The syllabus finalized by AU is implemented in the affiliated colleges. The College Academic Committee identifies the curricular gaps and plans for co-curricular/extracurricular activities in college. The college obtains feedback from all the stakeholders like students, alumni, employer and teachers on curriculum/syllabus to enrich the quality of activities performed in college for improvement of the professional skills, employability and entrepreneurial skills of the students.

### 2. SUMMARY OF FEEDBACK OBTAINED

S.NO	STAKEHOLDERS	NO. OF SAMPLE FEEDBACKS ANALYSED
1	Students	05
2	Teachers	05
3	Alumni	03
4	Employers	04

3. The feedback on curriculum was taken from the students of all years, Teachers, Alumni, and Employers at the end of each academic year.

  
PRINCIPAL



# PYDAH COLLEGE OF PHARMACY

(Approved by PCI, AICTE and Affiliated to Andhra University, Visakhapatnam)

Yanam Road, PATAVALA, KAKINADA-533461, E.G.Dt

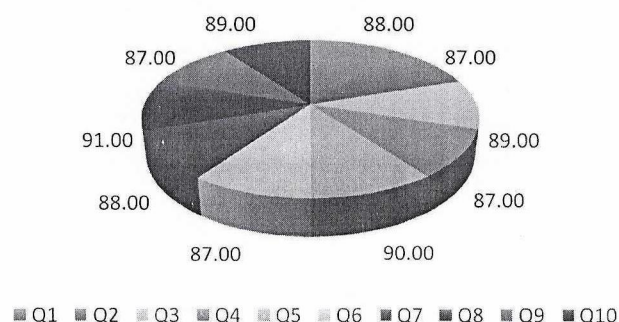
Telephone: 0884-2315344/45 Email id: princpharma@pydah.edu.in website: www.pydahpharmacy.edu.in



## TEACHERS FEEDBACK AND ANALYSIS ON CURRICULUM DESIGN 2019-20

S.No	QUESTIONNAIRE	FEEDBACK %
1	How well do you think the current curriculum aligns with the educational goals and objectives of our Institution?	88
2	Are there any specific topics or areas within the curriculum that you believe require further development or improvement?	87
3	How effectively does the curriculum cater to the diverse learning needs and abilities of our students?	89
4	Do you feel that the curriculum provides adequate opportunities for student engagement and active learning?	87
5	Are the learning resources and materials provided as part of the curriculum up-to-date and relevant to the subject matter?	90
6	In your opinion, does the curriculum encourage critical thinking, problem-solving, and creativity among students?	87
7	Have you encountered any challenges or difficulties in delivering the curriculum?	88
8	Are there any suggestions or recommendations you have for enhancing the curriculum to better meet the needs of our students?	91
9	How well does the curriculum incorporate real-world applications and practical skills relevant to the subject?	87
10	What strategies or changes, if any, would you suggest to make the curriculum more engaging and motivating for both teachers and students?	89

**TEACHER FEEDBACK ANALYSIS ON CURRICULUM DESIGN A.Y.2019-20**



*[Handwritten Signature]*  
PRINCIPAL

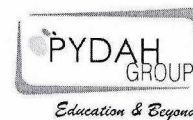


# PYDAH COLLEGE OF PHARMACY

(Approved by PCI, AICTE and Affiliated to Andhra University, Visakhapatnam)

Yanam Road, PATAVALA, KAKINADA-533461, E.G.Dt

Telephone: 0884-2315344/45 Email id: princpharma@pydah.edu.in website: www.pydahpharmacy.edu.in



## EMPLOYER FEEDBACK ON CURRICULUM ACADEMIC YEAR 2019-20

### 1. OBJECTIVE OF FEEDBACK

The college is affiliated to Andhra University, Visakhapatnam. The syllabus finalized by AU is implemented in the affiliated colleges. The College Academic Committee identifies the curricular gaps and plans for co-curricular/extracurricular activities in college. The college obtains feedback from all the stakeholders like students, alumni, employer and teachers on curriculum/syllabus to enrich the quality of activities performed in college for improvement of the professional skills, employability and entrepreneurial skills of the students.

### 2. SUMMARY OF FEEDBACK OBTAINED

S.NO	STAKEHOLDERS	NO. OF SAMPLE FEEDBACKS ANALYSED
1	Students	05
2	Teachers	05
3	Alumni	03
4	Employers	04

3. The feedback on curriculum was taken from the students of all years, Teachers, Alumni, and Employers at the end of each academic year.

  
PRINCIPAL

# PYDAH COLLEGE OF PHARMACY

(Approved by PCI, AICTE and Affiliated to Andhra University, Visakhapatnam)

Yanam Road, PATAVALA, KAKINADA-533461, E.G.Dt

Telephone: 0884-2315344/45

Email id: princpharma@pydah.edu.in

website: www.pydahpharmacy.edu.in

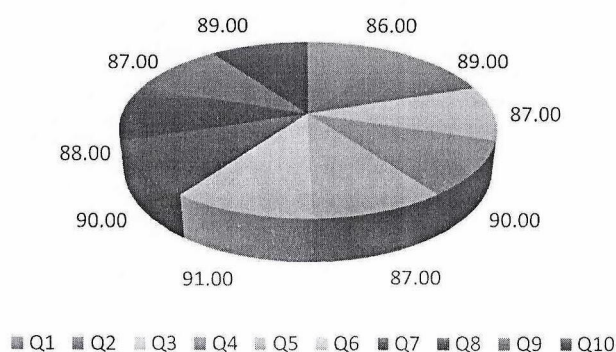


Education & Beyond

## EMPLOYER FEEDBACK AND ANALYSIS ON CURRICULUM DESIGN 2019-20

S.No	QUESTIONNAIRE	FEEDBACK %
1	How well do you think our graduates' skills and knowledge align with the current industry requirements?	86
2	Are there any specific areas of our curriculum that you believe require improvement to better prepare students for the workforce?	89
3	Do you find that our curriculum adequately covers the latest technological advancements and industry trends?	87
4	Are there any particular courses or subjects within our curriculum that you think are exceptionally beneficial to our graduates?	90
5	Are there any gaps in our curriculum that you believe should be addressed to enhance graduates' employability?	87
6	How well do our graduates demonstrate critical thinking and problem-solving skills, as taught in our curriculum?	91
7	Do you think our curriculum effectively integrates practical, hands-on experiences and real-world applications?	90
8	Are there any soft skills or non-technical competencies you feel our curriculum should focus on developing in our students?	88
9	How would you rate the overall adaptability and flexibility of our curriculum in response to changing industry needs?	87
10	In your opinion, does our curriculum adequately prepare students for leadership roles and ethical decision-making in the workplace?	89

### EMPLOYER FEEDBACK ANALYSIS ON CURRICULUM DESIGN A.Y.2019-20



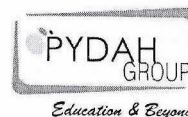
*[Signature]*  
PRINCIPAL

# PYDAH COLLEGE OF PHARMACY

(Approved by PCI, AICTE and Affiliated to Andhra University, Visakhapatnam)

Yanam Road, PATAVALA, KAKINADA-533461, E.G.Dt

Telephone: 0884-2315344/45 Email id: princpharma@pydah.edu.in website: www.pydahpharmacy.edu.in



## ALUMNI FEEDBACK ON CURRICULUM ACADEMIC YEAR 2019-20

### 1. OBJECTIVE OF FEEDBACK

The college is affiliated to Andhra University, Visakhapatnam. The syllabus finalized by AU is implemented in the affiliated colleges. The College Academic Committee identifies the curricular gaps and plans for co-curricular/extracurricular activities in college. The college obtains feedback from all the stakeholders like students, alumni, employer and teachers on curriculum/syllabus to enrich the quality of activities performed in college for improvement of the professional skills, employability and entrepreneurial skills of the students.

### 2. SUMMARY OF FEEDBACK OBTAINED

S.No	STAKEHOLDERS	NO. OF SAMPLE FEEDBACKS ANALYSED
1	Students	05
2	Teachers	05
3	Alumni	03
4	Employers	04

3. The feedback on curriculum was taken from the students of all years, Teachers, Alumni, and Employers at the end of each academic year.

  
PRINCIPAL



# PYDAH COLLEGE OF PHARMACY

(Approved by PCI, AICTE and Affiliated to Andhra University, Visakhapatnam)

Yanam Road, PATAVALA, KAKINADA-533461, E.G.Dt

Telephone: 0884-2315344/45 Email id: princpharma@pydah.edu.in website: www.pydahpharmacy.edu.in

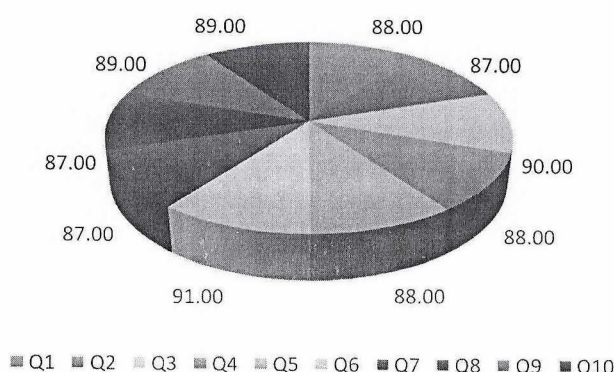


Education & Beyond

## ALUMNI FEEDBACK AND ANALYSIS ON CURRICULUM DESIGN 2019-20

S.NO	QUESTIONNAIRE	FEEDBACK %
1	How well did the curriculum prepare you for your post-graduation career or further studies?	88
2	Were there any specific courses or subjects in the curriculum that you found particularly valuable in your professional life?	87
3	Did you feel that the curriculum adequately covered both theoretical and practical aspects of your field of study?	90
4	Were there any areas in the curriculum where you felt improvements could be made to better prepare students for real-world challenges?	88
5	Did you find the curriculum to be up-to-date with industry trends and advancements in your field?	88
6	How did the curriculum incorporate opportunities for interdisciplinary learning and skill development?	91
7	Were there any elective courses or specializations that you wish had been offered during your time at the institution?	87
8	Did you have access to sufficient resources and support for pursuing independent research or projects related to your curriculum?	87
9	How did the curriculum foster critical thinking, problem-solving, and creativity in your academic journey?	89
10	In retrospect, what advice would you give to current students regarding how to make the most of the curriculum and educational opportunities available?	89

**ALUMNI FEEDBACK ANALYSIS ON CURRICULUM DESIGN A.Y.2019-20**



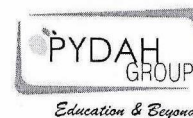
*X. Saha*  
PRINCIPAL

# PYDAH COLLEGE OF PHARMACY

(Approved by PCI, AICTE and Affiliated to Andhra University, Visakhapatnam)

Yanam Road, PATAVALA, KAKINADA-533461, E.G.Dt

Telephone: 0884-2315344/45 Email id: princpharma@pydah.edu.in website: www.pydahpharmacy.edu.in



## STUDENT FEEDBACK ON CURRICULUM ACADEMIC YEAR 2018-19

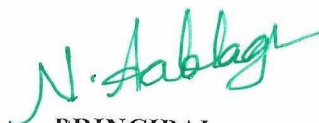
### 1. OBJECTIVE OF FEEDBACK

The college is affiliated to Andhra University, Visakhapatnam. The syllabus finalized by AU is implemented in the affiliated colleges. The College Academic Committee identifies the curricular gaps and plans for co-curricular/extracurricular activities in college. The college obtains feedback from all the stakeholders like students, alumni, employer and teachers on curriculum/syllabus to enrich the quality of activities performed in college for improvement of the professional skills, employability and entrepreneurial skills of the students.

### 2. SUMMARY OF FEEDBACK OBTAINED

S.NO	STAKEHOLDERS	NO. OF SAMPLE FEEDBACKS ANALYSED
1	Students	07
2	Teachers	04
3	Alumni	05
4	Employers	03

3. The feedback on curriculum was taken from the students of all years, Teachers, Alumni, and Employers at the end of each academic year.

  
PRINCIPAL



# PYDAH COLLEGE OF PHARMACY

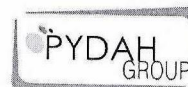
(Approved by PCI, AICTE and Affiliated to Andhra University, Visakhapatnam)

Yanam Road, PATAVALA, KAKINADA-533461, E.G.Dt

Telephone: 0884-2315344/45

Email id: princpharma@pydah.edu.in

website: www.pydahpharmacy.edu.in

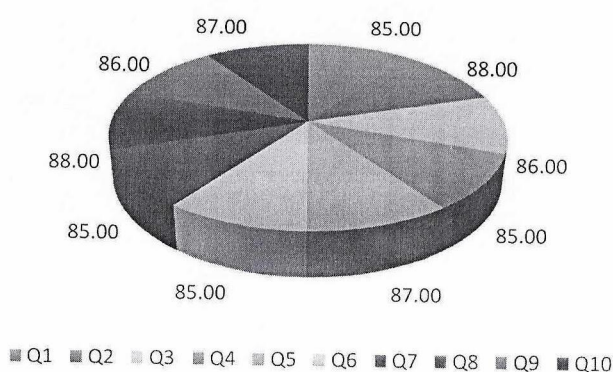


Education & Beyond

## STUDENT FEEDBACK AND ANALYSIS ON CURRICULUM DESIGN 2018-19

S.No	QUESTIONNAIRE	FEEDBACK %
1	Are the course materials and textbooks provided aligned with the learning objectives of the curriculum?	85
2	Do you find the curriculum to be appropriately challenging for your academic level?	88
3	How well do you feel the curriculum prepares you for future academic or career pursuits?	86
4	Are there any specific topics or subjects you believe should be added or expanded within the curriculum?	85
5	Do you feel that the curriculum provides a good balance between theoretical knowledge and practical application?	87
6	Are the assessment methods (exams, assignments, projects) used in the curriculum effective in evaluating your understanding of the course material?	85
7	How satisfied are you with the availability and accessibility of resources (e.g., library, online materials) related to your curriculum?	85
8	Are there any concerns about the pace at which the curriculum is delivered? Is it too fast, too slow, or just right?	88
9	Are there opportunities for you to provide input or suggestions for improvements to the curriculum, and if so, have you taken advantage of them?	86
10	Overall, how would you rate the quality and relevance of the curriculum to your educational goals and aspirations?	87

### STUDENT FEEDBACK ANALYSIS ON CURRICULUM DESIGN A.Y.2018-19



*N. Subbagh*

PRINCIPAL

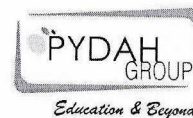


# PYDAH COLLEGE OF PHARMACY

(Approved by PCI, AICTE and Affiliated to Andhra University, Visakhapatnam)

Yanam Road, PATAVALA, KAKINADA-533461, E.G.Dt

Telephone: 0884-2315344/45 Email id: princpharma@pydah.edu.in website: www.pydahpharmacy.edu.in



## TEACHERS FEEDBACK ON CURRICULUM ACADEMIC YEAR 2018-19


### 1. OBJECTIVE OF FEEDBACK

The college is affiliated to Andhra University, Visakhapatnam. The syllabus finalized by AU is implemented in the affiliated colleges. The College Academic Committee identifies the curricular gaps and plans for co-curricular/extracurricular activities in college. The college obtains feedback from all the stakeholders like students, alumni, employer and teachers on curriculum/syllabus to enrich the quality of activities performed in college for improvement of the professional skills, employability and entrepreneurial skills of the students.

### 2. SUMMARY OF FEEDBACK OBTAINED

S.NO	STAKEHOLDERS	NO. OF SAMPLE FEEDBACKS ANALYSED
1	Students	07
2	Teachers	04
3	Alumni	05
4	Employers	03

3. The feedback on curriculum was taken from the students of all years, Teachers, Alumni, and Employers at the end of each academic year.

  
PRINCIPAL

# PYDAH COLLEGE OF PHARMACY

(Approved by PCI, AICTE and Affiliated to Andhra University, Visakhapatnam)

Yanam Road, PATAVALA, KAKINADA-533461, E.G.Dt

Telephone: 0884-2315344/45 Email id: princpharma@pydah.edu.in website: www.pydahpharmacy.edu.in

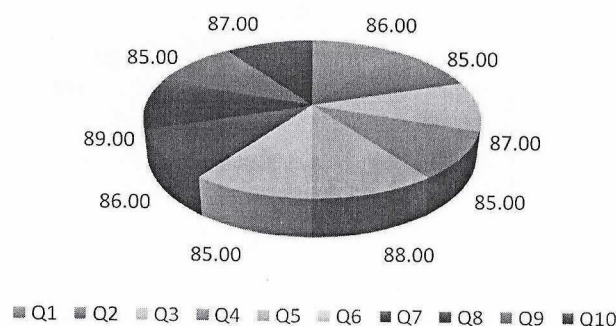


Education & Beyond

## TEACHERS FEEDBACK AND ANALYSIS ON CURRICULUM DESIGN 2018-19

S.No	QUESTIONNAIRE	FEEDBACK %
1	How well do you think the current curriculum aligns with the educational goals and objectives of our Institution?	86
2	Are there any specific topics or areas within the curriculum that you believe require further development or improvement?	85
3	How effectively does the curriculum cater to the diverse learning needs and abilities of our students?	87
4	Do you feel that the curriculum provides adequate opportunities for student engagement and active learning?	85
5	Are the learning resources and materials provided as part of the curriculum up-to-date and relevant to the subject matter?	88
6	In your opinion, does the curriculum encourage critical thinking, problem-solving, and creativity among students?	85
7	Have you encountered any challenges or difficulties in delivering the curriculum?	86
8	Are there any suggestions or recommendations you have for enhancing the curriculum to better meet the needs of our students?	89
9	How well does the curriculum incorporate real-world applications and practical skills relevant to the subject?	85
10	What strategies or changes, if any, would you suggest to make the curriculum more engaging and motivating for both teachers and students?	87

TEACHER FEEDBACK ANALYSIS ON CURRICULUM DESIGN A.Y.2018-19



*N. Abhaya*

PRINCIPAL

# PYDAH COLLEGE OF PHARMACY

(Approved by PCI, AICTE and Affiliated to Andhra University, Visakhapatnam)

Yanam Road, PATAVALA, KAKINADA-533461, E.G.Dt

Telephone: 0884-2315344/45

Email id: princpharma@pydah.edu.in

website: www.pydahpharmacy.edu.in



Education & Beyond

## EMPLOYER FEEDBACK ON CURRICULUM ACADEMIC YEAR 2018-19

### 1. OBJECTIVE OF FEEDBACK

The college is affiliated to Andhra University, Visakhapatnam. The syllabus finalized by AU is implemented in the affiliated colleges. The College Academic Committee identifies the curricular gaps and plans for co-curricular/extracurricular activities in college. The college obtains feedback from all the stakeholders like students, alumni, employer and teachers on curriculum/syllabus to enrich the quality of activities performed in college for improvement of the professional skills, employability and entrepreneurial skills of the students.

### 2. SUMMARY OF FEEDBACK OBTAINED

S.NO	STAKEHOLDERS	NO. OF SAMPLE FEEDBACKS ANALYSED
1	Students	07
2	Teachers	04
3	Alumni	05
4	Employers	03

3. The feedback on curriculum was taken from the students of all years, Teachers, Alumni, and Employers at the end of each academic year.

*N. Aablagi*

PRINCIPAL

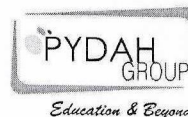


# PYDAH COLLEGE OF PHARMACY

(Approved by PCI, AICTE and Affiliated to Andhra University, Visakhapatnam)

Yanam Road, PATAVALA, KAKINADA-533461, E.G.Dt

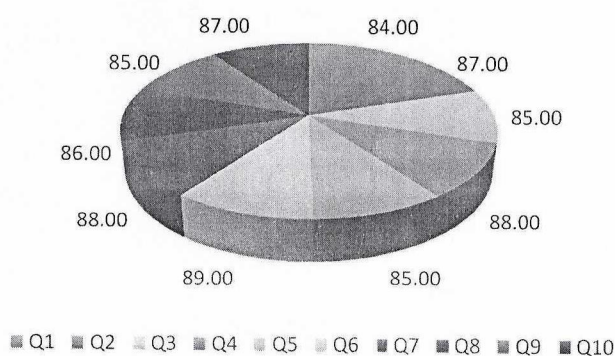
Telephone: 0884-2315344/45 Email id: princpharma@pydah.edu.in website: www.pydahpharmacy.edu.in



## EMPLOYER FEEDBACK AND ANALYSIS ON CURRICULUM DESIGN 2018-19

S.No	QUESTIONNAIRE	FEEDBACK %
1	How well do you think our graduates' skills and knowledge align with the current industry requirements?	84
2	Are there any specific areas of our curriculum that you believe require improvement to better prepare students for the workforce?	87
3	Do you find that our curriculum adequately covers the latest technological advancements and industry trends?	85
4	Are there any particular courses or subjects within our curriculum that you think are exceptionally beneficial to our graduates?	88
5	Are there any gaps in our curriculum that you believe should be addressed to enhance graduates' employability?	85
6	How well do our graduates demonstrate critical thinking and problem-solving skills, as taught in our curriculum?	89
7	Do you think our curriculum effectively integrates practical, hands-on experiences and real-world applications?	88
8	Are there any soft skills or non-technical competencies you feel our curriculum should focus on developing in our students?	86
9	How would you rate the overall adaptability and flexibility of our curriculum in response to changing industry needs?	85
10	In your opinion, does our curriculum adequately prepare students for leadership roles and ethical decision-making in the workplace?	87

EMPLOYER FEEDBACK ANALYSIS ON CURRICULUM DESIGN A.Y.2018-19



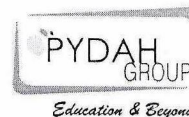
*N. Abbaji*  
PRINCIPAL

# PYDAH COLLEGE OF PHARMACY

(Approved by PCI, AICTE and Affiliated to Andhra University, Visakhapatnam)

Yanam Road, PATAVALA, KAKINADA-533461, E.G.Dt

Telephone: 0884-2315344/45 Email id: princpharma@pydah.edu.in website: www.pydahpharmacy.edu.in



## ALUMNI FEEDBACK ON CURRICULUM ACADEMIC YEAR 2018-19

### 1. OBJECTIVE OF FEEDBACK

The college is affiliated to Andhra University, Visakhapatnam. The syllabus finalized by AU is implemented in the affiliated colleges. The College Academic Committee identifies the curricular gaps and plans for co-curricular/extracurricular activities in college. The college obtains feedback from all the stakeholders like students, alumni, employer and teachers on curriculum/syllabus to enrich the quality of activities performed in college for improvement of the professional skills, employability and entrepreneurial skills of the students.

### 2. SUMMARY OF FEEDBACK OBTAINED

S.No	STAKEHOLDERS	NO. OF SAMPLE FEEDBACKS ANALYSED
1	Students	07
2	Teachers	04
3	Alumni	05
4	Employers	03

3. The feedback on curriculum was taken from the students of all years, Teachers, Alumni, and Employers at the end of each academic year.

*N. Abhag*  
PRINCIPAL

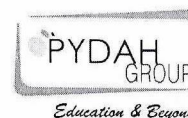


# PYDAH COLLEGE OF PHARMACY

(Approved by PCI, AICTE and Affiliated to Andhra University, Visakhapatnam)

Yanam Road, PATAVALA, KAKINADA-533461, E.G.Dt

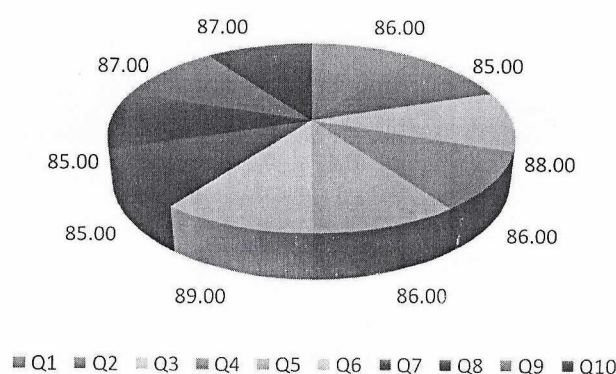
Telephone: 0884-2315344/45 Email id: princpharma@pydah.edu.in website: www.pydahpharmacy.edu.in



## ALUMNI FEEDBACK AND ANALYSIS ON CURRICULUM DESIGN 2018-19

S.NO	QUESTIONNAIRE	FEEDBACK %
1	How well did the curriculum prepare you for your post-graduation career or further studies?	86
2	Were there any specific courses or subjects in the curriculum that you found particularly valuable in your professional life?	85
3	Did you feel that the curriculum adequately covered both theoretical and practical aspects of your field of study?	88
4	Were there any areas in the curriculum where you felt improvements could be made to better prepare students for real-world challenges?	86
5	Did you find the curriculum to be up-to-date with industry trends and advancements in your field?	86
6	How did the curriculum incorporate opportunities for interdisciplinary learning and skill development?	89
7	Were there any elective courses or specializations that you wish had been offered during your time at the institution?	85
8	Did you have access to sufficient resources and support for pursuing independent research or projects related to your curriculum?	85
9	How did the curriculum foster critical thinking, problem-solving, and creativity in your academic journey?	87
10	In retrospect, what advice would you give to current students regarding how to make the most of the curriculum and educational opportunities available?	87

### ALUMNI FEEDBACK ANALYSIS ON CURRICULUM DESIGN A.Y.2018-19



*N. Abhaya*  
PRINCIPAL